



# Can Do News

April/May 2012

## Crews' NEWS

Page 1

MT Baseball & See Spot Run

Page 2

Letter from

John Cothorn

Page 3-5

Coffee & Donut Break

Page 6

Dodgeball

Page 7-8

"The Bob"

Page 9-10

Gardening with Larry

Page 11

United Way Celebration

Page 12

Announcements

Page 13

Mary Poppins & Cares Corner

Page 14

New Employees / CDCrew Committee



### Can Do Crew Team





# Letter from John Cothorn

Can Do Crew Newsletter April 2012

The spring semester is quickly coming to an end with Commencement to take place on May 5th. With that the Centennial Celebration will be drawing to a close. There were many events for the 100th celebration over this past year, and I hope you were able to enjoy a few of those.

Overall except for a couple of minor security/safety issues this semester has been relatively quiet. With some luck it will remain that way with maybe only a minor tornado warning that may disrupt campus life.

As President McPhee advised in his January message to campus, Governor Haslam included in his state budget proposal both an additional higher education state funding reduction and some new funds to cover improvements under the THEC Outcomes Based Funding Formula. Combined, those will result only in a very small base budget increase for MTSU.

What is exciting though is that Governor Haslam did include in his state budget proposal funds for construction of the new Science Building. Unfortunately, the proposed funding does include a campus matching funds component. Plans are to fund the match with unallocated local funds, private donations and some student fees. Dr. McPhee will keep the campus informed on this and barring any last minute state budget changes, we should see construction started before the start of the fall semester. This building is long awaited and much deserved.

Further, Governor Haslam included in his state budget proposal a 2.5% salary increase. As usually the case, it will not be fully funded, and higher education institutions will be required to fund a portion of that increase. Any additional increase and/or possible bonus will also have to be funded by the institutions. There has not yet been any formal discussion with the Tennessee Board of Regents about a possible higher salary increase or a bonus. President McPhee will also keep the campus informed in this regard.

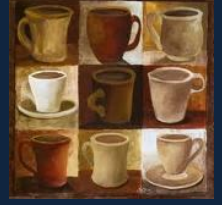
As always, I greatly appreciate your continued support of our division, especially your support of the Business and Finance Council and Image Committee. Your input, concerns and recommendations are welcomed.

Thanks for being a Business and Finance Can Do Crew member; and as we all should do, please be sure to thank our students for making MTSU their university of choice.

John W. Cothorn  
Senior Vice President



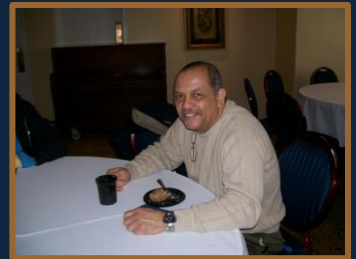
# Can Do NEWS



## Division of Business & Finance *Coffee & Donut Break*

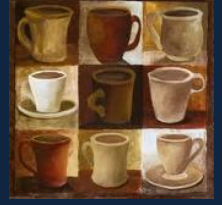


Coffee and Donuts and MTSU's prized chocolate milk was served to **Can Do CREW** members on January 31 at the James Union Building.





# Can Do NEWS



Division of Business & Finance  
*Coffee & Donut Break*

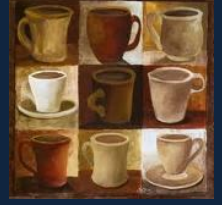




# Can Do NEWS

Division of Business & Finance

## Coffee & Donut Break



Door prizes were awarded to  
Roy Brewer, Broede Stucke,  
Wanda Anthony, Robert Smith, Stacy Smith,  
Julie Im, Joe Whitefield and Quintina Burton.



A big round of applause goes to the first ever  
**Can Do CREW Dodgeball Team!**

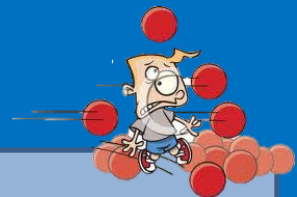


Team members consisted of **Linda Vogt, Anne Maples-Vaught, Shane Stone, Gerald Grimes, Anita Carter, Tammy Wiseman** and coached by **Ben Jones**.



They competed in the **NIRSA Faculty & Staff** game on **February 22<sup>nd</sup>** against tough teams from the **Rec Center** and **Distance Learning**.


You brought back memories of elementary school PE classes and made us proud!




“The  
Bob”



“The  
Bob”



In **Accounting Services**, **March Madness Bracketology** has been a long standing tradition/competition. No money ever changed hands . . . just a lot of hot air! So it was taken to a new level in 2008 with the induction of our **NCAA Basketball Bracket Bobble Head trophy**, officially dubbed “**THE BOB.**” (Yes, we had an unveiling and naming ceremony.) This auspicious trophy is highly coveted each year by all in Accounting Services. The “Tony,” the “Oscar,” and the “Stanley” have nothing on “**THE BOB.**” It’s really been fun too!



Our creative Director, **Denise Hollowell**, *decorates the office* and incorporates a copy of each bracket as part of the decorations. The good natured **trash-talking begins** weeks before the matchups are announced, then the brackets are filled in and posted before the tip off of the first game. Excitement builds as scores are tallied each week and with completion of the Championship game, the **bracket with the highest score wins the coveted trophy**. A plate with the winner’s name and Championship teams is added to the base. The rules are the winner gets bragging rights and possession of “**THE BOB**” until the next year’s **March Madness** and in the event this person may leave our department, “**THE BOB**” stays!!



# Can Do NEWS



The **prominent list of prior winners** has been:  
2008 Denise Hollowell, **Kansas vs. Memphis**;  
2009 Karl Krushenski, **UNC vs. Michigan St** ;  
2010 Andrea Hale, **Duke vs. Butler**;  
and 2011 Anita Carter, **UConn vs. Butler**.

Already with 5 years of playing for “**THE BOB**”, we look forward to having to add additional bases to him and watching him grow with all past and future winners.



**AND NOW OUR NEW 2012 WINNER OF  
“THE BOB” ...**

**BEN JONES!!!**



**Congratulations, Ben!!!**

Page 8

Written & submitted by:  
Anita Carter  
and Denise Hollowell

Thanks!







# Can Do NEWS

## Gardening with Larry



**MTSU's** own

**Greenhouse Manager, Larry Sizemore,** generously donated his time 🕒 and knowledge 🦉

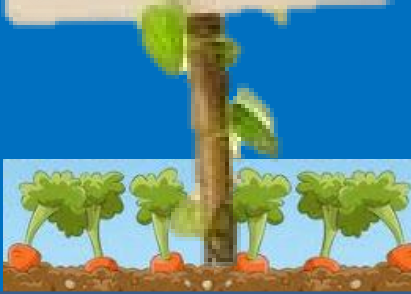
to the **Can Do CREW** with **Gardening** classes.



March 26<sup>th</sup>  
April 4<sup>th</sup>  
April 11<sup>th</sup>



## Gardening with Larry



This spring, a dozen members of the **Can Do CREW** assembled in the Horticulture Building during their lunch time to get **great gardening tips and help** from our Greenhouse Manager, **Larry Sizemore**.



Thanks,  
Larry!





# Celebration



## CREW members in attendance.

- Mary Glass
- Linda Hardymon
- Linda M. Jordan



### Top 10 Campaigns

The top ten 2011 United Way campaigns in order of total funds raised:

1. General Mills - \$671,325.00
2. Publix - \$274,684.00
3. Yates Services - \$205,220.00
4. Rutherford Co. Gov. and Schools - \$190,698.00
5. Nissan - \$140,494.00
6. State Farm Insurance - \$126,245.00
7. **MTSU - \$81,578.00**
8. Bridgestone - \$67,025.00
9. Heritage Farms Dairy - \$42,026.00
10. Murfreesboro City - \$35,449.00

"I'm overwhelmed. The community responded to our plea to get close to \$3 million," said Andrew Oppmann, 2011 board chairman of United Way.

~ DNJ



United Way  
of Rutherford & Cannon Counties  
**Grand Total**  
**\$2,955,799.40**



**Congratulations**  
to

**Ben Jones (Accounting Services)**  
and his wife, Helen Yuan,  
on the birth of their 9 pound baby boy,  
Luke Jones, on March 21, 2012.



**Congrats!** 

Nick Dennis,  
son of Don & **Diana Dennis**  
(**Campus Planning**),  
will be graduating from  
**MIDDLE TENNESSEE**  
**CHRISTIAN SCHOOL**  
and will be attending  
**MTSU**  
in the Fall.

*Congratulations*  
to

**Becky Hall (Post Office)**  
on her marriage  
to Rufus Evans  
on Saturday  
April 21, 2012.



**Congratulations**

to Elizabeth Hooper,  
daughter of **Lottie Hooper (Grants)**,  
who graduated on May 5<sup>th</sup>, 2012  
from **Lipscomb University**  
with a degree of Bachelor of Science  
in Elementary Education, Magna Cum Laude.

**Way to go, Les!**



We caught **Les Mayberry of Energy Services** doing something right. Les submitted an existing project that replaced high energy bulbs with energy saving LEDs to the TVA's Energy Right Solutions for Business & Industry Energy Efficiency Programs. Because of his efforts, MTSU received a check from TVA for **\$15,234** as a rebate for energy savings.

A group of **30**

**Can Do** CREW members,  
their families, and friends  
attended

**MARY POPPINS**

Broadway musical  
on March 21st at 7:30  
in TPAC's Jackson Hall



Can Do  
Crew



Volunteer Opportunities  
**Corner**

cook?



seamstress?

florist?



landscaper?



scrapbooker?

**Do you have  
a skill, talent, or hobby  
that you would  
like to share?**

Email [Diana.Dennis@mtsu.edu](mailto:Diana.Dennis@mtsu.edu)



crafter?

photographer?



cake decorator?

software  
specialist?

repairman?



Volunteers Needed

Help with tours and/or programs at  
**Bradley Academy  
Museum and Cultural Center**  
@ 415 S. Academy – closed Sun. & Mon.  
Contact Katie Wilson at 566-7189 for  
more information.



Read to the children at  
**Wee Care Day Care**

(510 S. Hancock)

Reading times are  
10:30am or 3:00pm

on Mon, Tues, Thurs, or Fri  
(not on Wed).

Contact Rochelle Smith at 890-4317  
to set up a time or for more info.



## New Employees

Taylor Cheney	Public Safety
Michael Crosslin	Parking Services
Teresa Crouch	Parking Services
Benjamin Hunt	Public Safety
Pearly Moore	Parking Services
D'Andrea Woodruff	Parking Service

## 2011-2012 Image Committee

The Image Committee is made up of employees from the Can Do Crew. The committee helps to lead the Can Do Crew. It also helps to accomplish the goals of the Can Do Crew.

This year the Image Committee members are:

<u>Name</u>	<u>Area/Dept.</u>	<u>Phone #</u>
Diana Dennis, Chair	Campus Planning	494-7660
Terri Carlton	Construction & Renovation Svcs.	898-5382
Trina Clinton	Human Resource Services	898-5344
Jennifer Coppinger	Budget & Planning	898-5377
Ben Jones	Business Office	898-5328
Kelli Higgenbotham	Event Coordination	898-5002
Broede Stucky	Public Safety	898-3477
Ann-Marie Toombs	Parking & Transportation Svcs.	898-2850
Lori Yoders	Facilities Services	904-8027

