

**DIVISION  
OF  
BUSINESS AND FINANCE**

Volume 11 Issue 3

*Can Do* NEWS

September 2013





# Can Do News Letter from John Cothorn

## CAN DO CREW NEWSLETTER SEPTEMBER 2013

Fall semester has started and, as usual, the Can Do Crew was well prepared. Hopefully the hot weather is close to being over and cool weather will become the norm. I think we all are looking forward to true “football weather.”

With the new academic year we only had a few small issues. We did though have a 6% enrollment drop, which was more than we had anticipated. Most Tennessee Board of Regents schools had an enrollment decrease as well. We will be able to manage this year’s budget even though we had revenue reduction due to that enrollment drop. It will, however, be difficult to do so in the future if the enrollment drop trend continues.

As advised this summer because of that trend, Dr. McPhee has placed a greater emphasis on enrollment recruitment, retention and transfers. Significant work is being done to improve on those areas and that work includes the academic departments and faculty. We very much want to be successful in order to avoid future budget reductions that may require employee reductions.



# Can Do News

## Letter from

### John Cothern

Even if we experience enrollment drops, it will paramount to not let that reduce our service to student. That is really why we are here.

Please be sure to read President McPhee's August 2013 News and Information message that is on the MTSU website. It provides the latest information on several areas of campus.

Your continued support of the Image Committee and participation Can Do Crew events will be most appreciated. I saw many of you at our first two home football games. Athletics is pleased with your support.

Thanks again for being a Business and Finance Can Do Crew member; and if you have a concern or recommendation, please do not hesitate to let your supervisor or me know.

As always, we should be thankful for our jobs and the many blessings that we have and thank all students for attending MTSU.

John W. Cothern  
Senior Vice President



# Can Do Crew Events

## Ice Cream Social



Everyone had a blast at the Ice Cream Social on August 1<sup>st</sup>. We had close to 150 Can Do members take part of the delicious event.







**Don't  
FORGET!**



**The Employee  
Benefits Fair  
October 2, 2013  
Tennessee Room  
James Union Building  
9:00 a.m. to 1:00 p.m.**

**2013 Annual Enrollment Transfer Period (AETP)  
October 1 through November 1, 2013**

- All information regarding the 2013 Annual Enrollment Transfer Period is located on the HRS web page under the “Annual Enrollment” tab. The link to the designated AETP web page is [http://www.mtsu.edu/hrs/benefits/Annual\\_Enrollment\\_Transfer.php](http://www.mtsu.edu/hrs/benefits/Annual_Enrollment_Transfer.php)
- If you are not making any changes to your benefits, no action is necessary (exception – flexible benefits).
- Flexible Benefits booklets and forms are not available at this time. As soon as they are available, HRS will send out a notification.
- Any changes made to State of Tennessee benefits, must be done through the Edison Employee Self-Service System (ESS). Employees will receive a temporary user name and password mailed to the home address. You need to bring this with you if you attend one of the assistance sessions. Prior username and password for Edison will NOT work and you CANNOT use your MTSU Banner or Pipeline Credentials.
- The HRS Benefits office will be posting a quarterly “Newsletter” highlighting benefits. The first newsletter is posted on the above web page.

CAN DO CREW SUPPORTS  
BLUE RAIDER ATHLETICS



## HOMECOMING

Saturday, October 5<sup>th</sup>

- PARADE @ 10:00
- RAIDER WALK @ 12:15
- GAME @ 2:30

MTSU vs. East Carolina

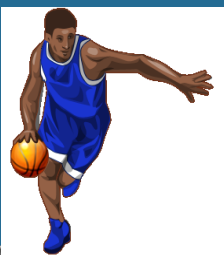
Don't miss your opportunity to cheer on your Blue Raiders during the first ever Conference USA home game on October 5 vs. East Carolina!

Join the entire MTSU community as we celebrate homecoming 2013, themed "The Deep Blue Sea", by taking advantage of an exclusive online offer. You can now purchase reserved seats for only \$8 (reg. \$18) as a thank you for being a valuable member of the MTSU family.

To purchase exclusive MTSU Faculty and Staff Appreciation Day tickets, click on the following link and enter the code "TRUEBLUE"

<https://oss.ticketmaster.com/html/go.html?l=EN&t=mtsu&o=152587&g=73>

Pass code - TRUEBLUE

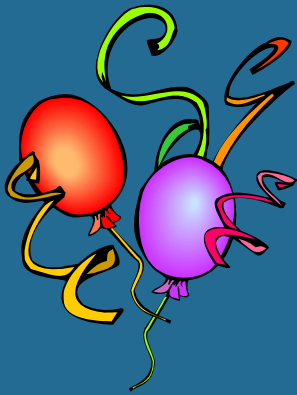


\*\*This is an exclusive online offer using the link above. The discounted tickets will not be available for walk up sales on the day of the game\*\*

Season tickets on sale NOW for both Men's and Women's basketball. Guess what, they can be payroll deducted. Women's are only \$49 a seat and Men's are \$70 a seat.

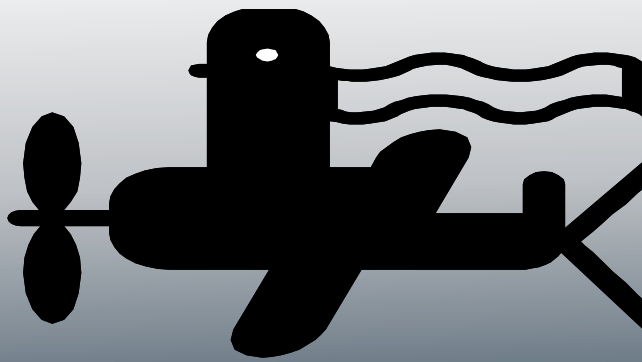


# Can Do News Special Recognition

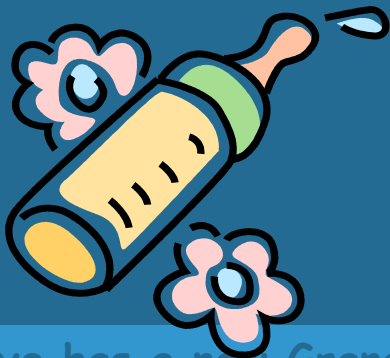


Beverly Smithson  
won the  
quarterly  
secretarial /  
clerical award





**CAN DO CREW  
ANNOUNCEMENTS**



Tammie Dye has a new Grandson:  
Alejandro Yegros  
Born on July 25  
Weighing 6lbs 9 oz  
20 1/2 inches!!!  
Parents Britnea & Ale Yegros and  
live in Asuncion, Paraguay



Teresa Isbell, Grounds Services,  
would like to announce the birth of  
her sixth grandchild:  
Abigail Marie Laxson  
Born on June 29, 2013  
Weighting 7lbs 8oz  
Home birthed in McMinnville, TN

# PROUD CAN DO CREW FAMILY MEMBERS

Tammy Hughes from the Key Shop in Facilities Services, is a proud mother to Caleb Hughes who fishes for the MTSU Bass Fishing Team. Caleb and Cory Jones placed 3rd for MTSU in the TN Collegiate Bass Fishing Trail tournament on Nickajack Lake on September 21st. Next stop—Guntersville Lake on October 26th.

Caleb and Cory



**Good Luck Guys!!**





# The Big News at the Campus Post Office!



The Campus Post Office spent the summer taking over the space held by many of the unused post office boxes. The new square footage is about 2 ½ times the size of the previous workspace. They are now able to house all of the many packages that resident students receive – going from 8 package shelves to 24. Along with this wonderful renovation the Post Office has a new counter area, shiny new furniture, and room to move around.



# Can Do Crew Up Coming Events



Look for an email on coming events!



**October**  
**Bowling Night**  
**with the family**

**November**  
**Can Food and**  
**Toiletry Drive**



**DECEMBER**  
**A NIGHT AT THE**  
**THEATER**